

first for homes

first for property in life - firstforhomes.co.uk

Contact Allan England's Team
01592 752 944



Willow Crescent, Glenrothes
Offers over £167,995

Willow Crescent, Glenrothes

Welcome to Willow Crescent a Spacious 3-Bed Semi-Detached Villa With Driveway & Detached Garage In The Sought After Area Of South Parks, Glenrothes!

Allan England's award winning team at first for homes are proud to welcome to the market this spacious 3-Bed Semi-Detached Villa situated within South Parks, central Glenrothes. The property comprises entrance hall, bright and spacious lounge with feature wall, modern kitchen, dining room, downstairs shower room, stairs to upper level leading to 3 bedroom and family bathroom, Externally, there are generous front and rear garden grounds, large driveway and detached garage. Situated only 200 yards from South Parks Primary School, an ideal location for families. Early viewing is highly recommended to ensure you don't miss out!

HOME REPORT VALUE - £175,000

EPC RATING - C

COUNCIL TAX BAND - D

Call first for homes - first for trust... first for service... first for aftercare!

Glenrothes is regarded as one of the most successful Towns in Scotland with a wealth of local amenities including Kingdom Shopping Centre as well as sport and leisure at Michael Woods and a multi-screen cinema. Glenrothes boasts its very own 18-hole Golf course and both Primary and Secondary schooling are available. For the commuter the A92 allows swift access to Edinburgh and there are railway stations at both Thornton and Markinch.





SITUATION – Glenrothes

ENTRANCE VESTIBULE

ENTRANCE HALLWAY

LOUNGE

19'4" x 10'5" (approx) (5.91m x 3.20m (approx))

KITCHEN

11'7" x 8'7" (approx) (3.54m x 2.64m (approx))

DOWNSTAIRS SHOWER ROOM

STAIRS TO UPPER LEVEL

BEDROOM 1

16'1" x 8'9" (approx) (4.92m x 2.67m (approx))

BEDROOM 2

10'5" x 9'6" (approx) (3.18m x 2.91m (approx))

BEDROOM 3

9'2" x 7'5" (approx) (2.81m x 2.27m (approx))

SINGLE GARAGE

19'11" x 9'6" (approx) (6.08m x 2.91m (approx))

4 CAR DRIVEWAY

FRONT & REAR GARDENS

INFORMATION

Information

These particulars are prepared on the basis of information provided by our clients. We have not tested the electrical system or any electrical appliances, nor where applicable, any central heating system. All sizes are recorded by electronic tape measurement to give an indicative, approximate size only. Prospective purchasers should make their own enquiries – no warranty is given or implied. This schedule is not intended to, and does not form any contract.

FREE Valuation

Selling Your Home?

Choose first for homes - a highly experienced estate agency team you can trust to sell your home at the highest possible price. Offering fantastic savings on selling fees, with no compromise on service, free professional photography highlighting your home in its best light, first for homes will be your first choice. Contact us today to arrange your appointment.



first for trust



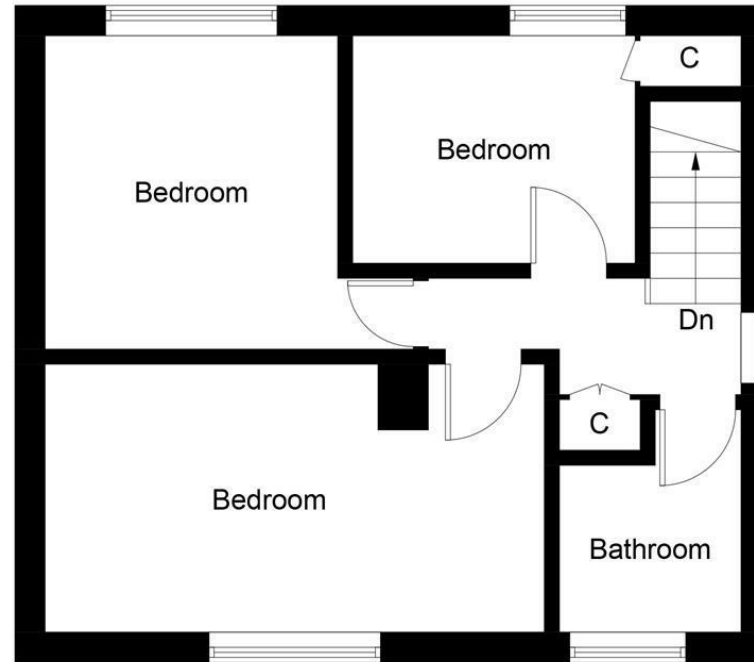
first for service



first for aftercare



Ground Floor



First Floor

Illustration for identification purposes only, measurements are approximate, not to scale. Fourlabs.co © (ID1218729)

first for homes
first for property in life - firstforhomes.co.uk

Contact Allan England's Team
01592 752 944

32 North Street, Glenrothes, Fife KY7 5NA
Fax: 01592 807947
sales@firstforhomes.co.uk
www.firstforhomes.co.uk